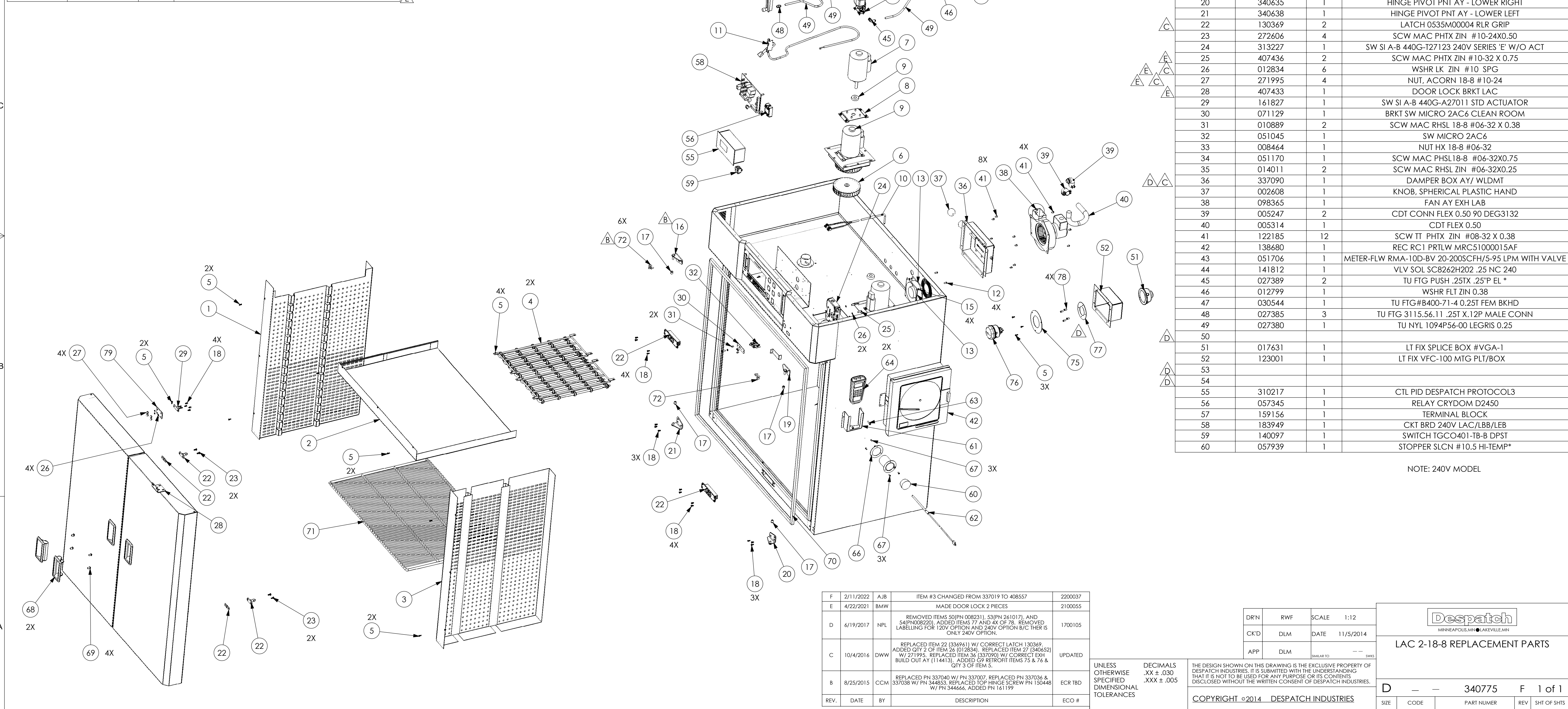


ITEM	PART NUMBER	QTY.	DESCRIPTION
61	163023	1	POCKET PROBE READOUT
62	163101	1	T/C K48U-006-00-19-F1B084-6
63	272527	2	SCW TT PHTX ZIN #08-32X1.00
64	325729	1	METER DG OMGA HH801B HAND HELD DUAL CHANNEL
65	336950	1	2 INCH PORT
66	336951	1	2 INCH PORT COVER PLATE
67	132623	6	RIV POP SST .12DIAx.032x.187 LG
68	336960	2	HANDLE FLUSH W/ GASKET
69	300262	4	CAP PH TX ZIN M6 X 12
70	337011	1	DOOR SEAL FRAME LAC2-18
71	107138	1	SHELF PLATED WIRE LAC2-18 23.75"x35.31"
72	344666	6	SCW MAC THTX ZIN #10-24X0.50
73	344853	1	CONTROL PANEL PNT AY LAC-8
74	161199	4	SCW SHR SK 18-8 0.19X0.38
75	354826	1	SNAP RING, G9 LT FIXTURE RETROFIT
76	334411	1	LT FIX 40W G9 OVEN 230V, BJB 77.953.3103.72 W/230V LAMP
77	354829	1	FLANGE, HOUSING END, G9 FIXTURE
78	272502	4	SCW MAC PHTX ZIN #08-32X0.50
79	407434	1	DOOR LOCK PLATE LAC

ITEM	PART NUMBER	QTY.	DESCRIPTION
1	337017	1	RECIRC DUCT PLATE LAC2-12/18-8
2	337018	1	HEATER COVER PLATE LAC2-18
3	408557	1	SUPPLY DUCT WLDMT LAC2-12/18-8
4	007776	2	HTR TUTCO 2.4KW 208/240V
5	133033	34	SCW SM PHTX ZIN #06X0.50
6	015876	1	FAN WH 05.75X01.00X0.500 ALZ CCW
7	141828	1	MTR 00.25HPSODP11523015060
8	337034	1	MOTOR MTG PLATE
9	130311	2	SEAL 1.5 OD X 0.62 ID X .38
10	340595	1	T/C AY LAC
11	090531	1	CHOKE CBL 3'LG 402L-032-17 W/COATED CABLE
12	145984	4	SCW MAC PHTX ZIN #06-32X0.50
13	015229	1	ENCL BLWR UF12A23 STH 230V
14	012814	4	WSHR LK ZIN #06 SHKPRF INT
15	008484	4	NUT HX ZIN #06-32
16	337045	1	HINGE PIVOT PNT AY - UPPER LEFT
17	016008	4	BRG SLVFLG BRZ 0.38X0.25X0.50*
18	150448	18	SCW MAC FHTX ZIN #10-24X0.50
19	337029	1	HINGE PIVOT PNT AY - UPPER RIGHT
20	340635	1	HINGE PIVOT PNT AY - LOWER RIGHT
21	340638	1	HINGE PIVOT PNT AY - LOWER LEFT
22	130369	2	LATCH 0535M00004 RLR GRIP
23	272606	4	SCW MAC PHTX ZIN #10-24X0.50
24	313227	1	SW SI A-B 440G-T27123 240V SERIES 'E' W/O ACT
25	407436	2	SCW MAC PHTX ZIN #10-32 X 0.75
26	012834	6	WSHR LK ZIN #10 SPG
27	271995	4	NUT, ACORN 18-8 #10-24
28	407433	1	DOOR LOCK BRKT LAC
29	161827	1	SW SI A-B 440G-A27011 STD ACTUATOR
30	071129	1	BRKT SW MICRO 2AC6 CLEAN ROOM
31	010889	2	SCW MAC RHSL 18-8 #06-32 X 0.38
32	051045	1	SW MICRO 2AC6
33	008464	1	NUT HX 18-8 #06-32
34	051170	1	SCW MAC PHS18-8 #06-32X0.75
35	014011	2	SCW MAC RHSL ZIN #06-32X0.25
36	337090	1	DAMPER BOX AY/ WLDMT
37	002608	1	KNOB, SPHERICAL PLASTIC HAND
38	098365	1	FAN AY EXH LAB
39	005247	2	CDT CONN FLEX 0.50 90 DEG3132
40	005314	1	CDT FLEX 0.50
41	122185	12	SCW TT PHTX ZIN #08-32 X 0.38
42	138680	1	REC RC1 PRTLW MRC51000015AF
43	051706	1	METER-FLW RMA-10D-BV 20-200SCFH/5-95 LPM WITH VALVE
44	141812	1	VLV SOL SC8262H202 .25 NC 240
45	027389	2	TU FTG PUSH .25TX .25" P EL *
46	012799	1	WSHR FLT ZIN 0.38
47	030544	1	TU FTG#B400-71-4 0.25T FEM BKHD
48	027385	3	TU FTG 3115.56.11 .25T X.12P MALE CONN
49	027380	1	TU NYL 1094P56-00 LEGRIS 0.25
50			
51	017631	1	LT FIX SPLICE BOX #VGA-1
52	123001	1	LT FIX VFC-100 MTG PLT/BOX
53			
54			
55	310217	1	CTL PID DESPATCH PROTOCOL3
56	057345	1	RELAY CRYDOM D2450
57	159156	1	TERMINAL BLOCK
58	183949	1	CKT BRD 240V LAC/LBB/LEB
59	140097	1	SWITCH TGCO401-TB-B DPST
60	057939	1	STOPPER SLCN #10.5 HI-TEMP*



NOTE: 240V MODEL

REV.	DATE	BY	DESCRIPTION	ECO #
F	2/11/2022	AJB	ITEM #3 CHANGED FROM 337019 TO 408557	2200037
E	4/22/2021	BMW	MADE DOOR LOCK 2 PIECES	2100055
D	6/19/2017	NPL	REMOVED ITEMS 50 (PN 008231), 53 (PN 261017), AND 54 (PN 008220). ADDED ITEMS 77 AND 4X OF 78. REMOVED LABELLING FOR 120V OPTION AND 240V OPTION B/C THERE IS ONLY 240V OPTION.	1700105
C	10/4/2016	DWW	REPLACED ITEM 22 (336961) W/ CORRECT LATCH 130369. ADDED QTY 2 OF ITEM 26 (012834). REPLACED ITEM 27 (340652) W/ 271995. REPLACED ITEM 36 (337090) W/ CORRECT EXH BUILD OUT AY (114413). ADDED G9 RETROFIT ITEMS 75 & 76 & QTY 3 OF ITEM 5.	UPDATED
B	8/25/2015	CCM	REPLACED PN 337040 W/ PN 337007. REPLACED PN 337036 & 337038 W/ PN 344853. REPLACED TOP HINGE SCREW PN 150448 W/ PN 344666. ADDED PN 161199	ECR 18D

DRN	RWF	SCALE	1:12
CK'D	DLM	DATE	11/5/2014
APP	DLM	SMALLER TO	---

**Despatch**  
MINNEAPOLIS, MN • KEVILLIEMN

**LAC 2-18-8 REPLACEMENT PARTS**

UNLESS OTHERWISE SPECIFIED DIMENSIONAL TOLERANCES DECIMALS .XX ± .030 .XXX ± .005 THE DESIGN SHOWN ON THIS DRAWING IS THE EXCLUSIVE PROPERTY OF DESPATCH INDUSTRIES. IT IS SUBMITTED WITH THE UNDERSTANDING THAT IT IS NOT TO BE USED FOR ANY PURPOSE OR ITS CONTENTS DISCLOSED WITHOUT THE WRITTEN CONSENT OF DESPATCH INDUSTRIES.

D	---	340775	F	1 of 1
SIZE	CODE	PART NUMBER	REV	SHT OF SHTS

COPYRIGHT ©2014 DESPATCH INDUSTRIES