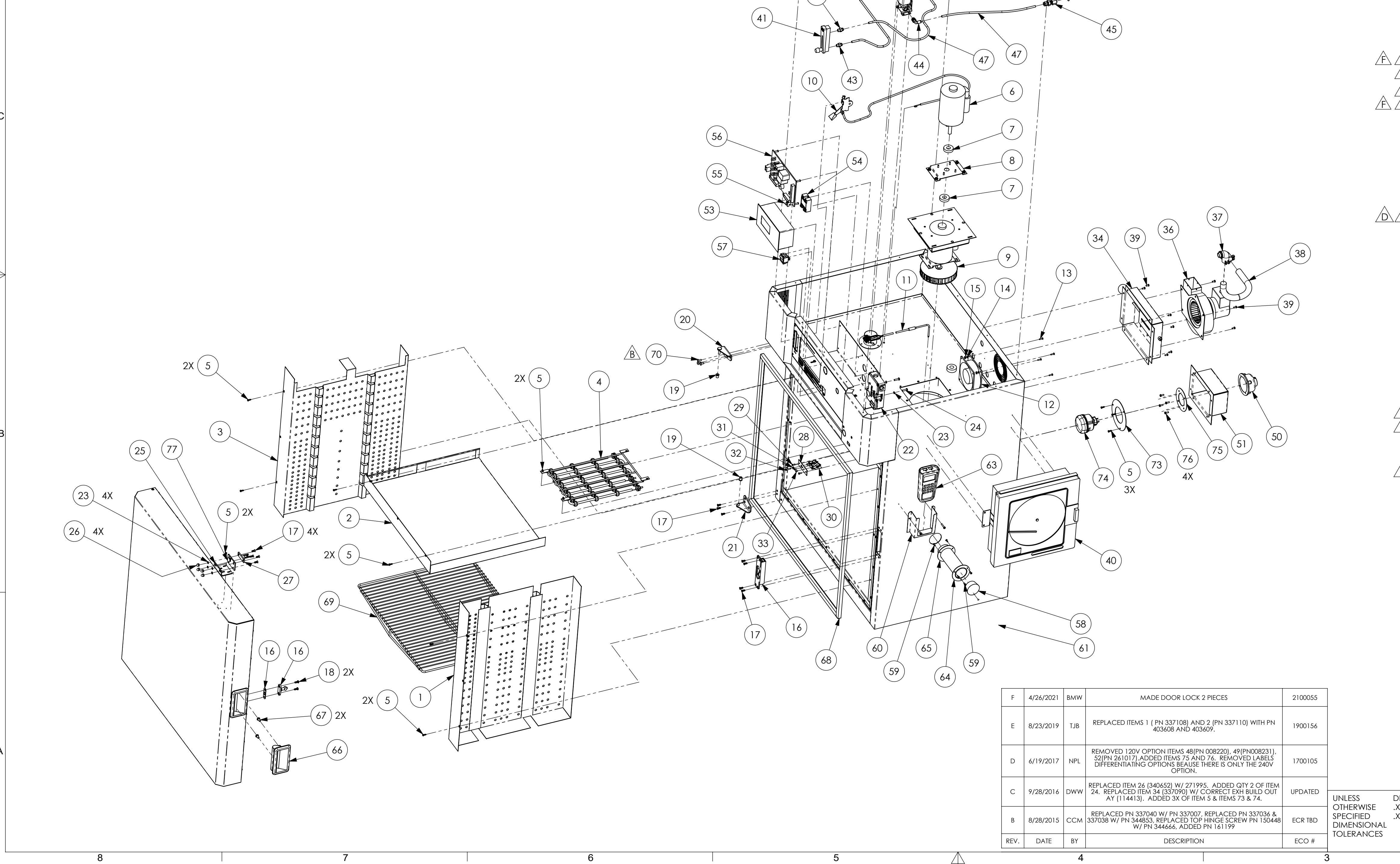


LIST OF MATERIAL			
ITEM	PART NUMBER	QTY.	DESCRIPTION
59	132623	6	RIV POP SST .12DIA X.032X.187 LG
60	163023	1	POCKET PROBE READOUT
61	163101	1	T/C K48U-006-00-19-F1B084-6
62	272527	2	SCW TT PHTX ZIN #08-32X1.00
63	325729	1	METER DG OMGA HH801B HAND HELD DUAL CHANNEL
64	336950	1	PORT TUBE 2.0 IN (6.21LG)
65	336951	1	2 INCH PORT COVER PLATE
66	336960	1	HANDLE FLUSH W/ GASKET
67	300262	2	CAP PH TX ZIN M6 X 12
68	337112	1	DOOR SEAL FRAME LAC1-67
69	107502	1	SHELF PLATED WIRE LAC1-67REINF 19.75"X23.75"
70	344666	3	SCW MAC THTX ZIN #10-24X0.50
71	344853	1	CONTROL PANEL PNT AY LAC-8
72	161199	4	SCW SHR SK 18-8 0.19X0.38
73	354826	1	SNAP RING, G9 LT FIXTURE RETROFIT
74	334111	1	LT FIX 40W G9 OVEN 230V, BJB 77.953.3103.72 W/230V LAMP
75	354829	1	FLANGE, HOUSING END, G9 FIXTURE
76	272502	4	SCW MAC PHTX ZIN #08-32X0.50
77	407434	1	DOOR LOCK PLATE LAC

LIST OF MATERIAL			
ITEM	PART NUMBER	QTY.	DESCRIPTION
1	403608	1	SUPPLY DUCT WLDMT LAC1-67-8
2	337109	1	HEATER COVER PLATE LAC1-67
3	403609	1	RECIRC DUCT WLDMT LAC1-67-8
4	142900	1	HTR TUTCO 2.4 KW 208/240V
4	325885	1	HTR TUTCO 4.8KW 208/240V 21-4075-00
5	133033	30	SCW SM PHTX ZIN #06X0.50
6	141828	1	MTR 00.25HPSODP11523015060
7	130311	2	SEAL 1.5 OD X 0.62 ID X .38
8	337034	1	MOTOR MTG PLATE
9	015876	1	FAN WH 05.75X01.00X0.500 ALZ CCW
10	090531	1	CHOKE CBL 3'LG 402L-032-17 W/COATED CABLE
11	340595	1	T/C AY LAC
12	015229	1	ENCL BLWR UF12A23 STH 230V
13	145984	4	SCW MAC PHTX ZIN #06-32X0.50
14	012814	4	WSHR LK ZIN #06 SHKPRF INT
15	008484	4	NUT HX ZIN #06-32
16	336961	1	LATCH 0535L00004 RLR GRIP
17	150448	11	SCW MAC FHTX ZIN #10-24X0.50
18	272606	2	SCW MAC PHTX ZIN #10-24X0.50
19	016008	2	BRG SLVFLG BRZ 0.38X0.25X0.50*
20	337045	1	HINGE PIVOT PNT AY - UPPER LEFT
21	340638	1	HINGE PIVOT PNT AY - LOWER LEFT
22	313227	1	SW SI A-B 440G-T27123 240V SERIES 'E' W/O ACT
23	012834	6	WSHR LK ZIN #10 SPG
24	407436	2	SCW MAC PHTX ZIN #10-32 X 0.75
25	407433	1	DOOR LOCK BRKT LAC
26	271995	4	NUT, ACORN 18-8 #10-24
27	161827	1	SW SI A-B 440G-A27011 STD ACTUATOR
28	071129	1	BRKT SW MICRO 2AC6 CLEAN ROOM
29	010889	2	SCW MAC RHSL 18-8 #06-32 X 0.38
30	051045	1	SW MICRO 2AC6
31	008464	1	NUT HX 18-8 #06-32
32	051170	1	SCW MAC PHSL18-8 #06-32X0.75
33	014011	2	SCW MAC RHSL ZIN #06-32X0.25
34	337090	1	DAMPER BOX AY/ WLDMT
35	002608	1	KNOB, SPHERICAL PLASTIC HAND
36	098365	1	FAN AY EXH LAB
37	005247	2	CDT CONN FLEX 0.50 90 DEG3132
38	005314	1	CDT FLEX 0.50
39	122185	12	SCW TT PHTX ZIN #08-32 X 0.38
40	138680	1	REC RC1 PRTLW MRC51000015AF
41	051706	1	METER-FLW RMA-10D-BV 20-200SCFH/5-95 LPM WITH VALVE
42	141812	1	VLV SOL SC8262H202 .25 NC 240
43	027385	3	TU FTG 3115.56.11 .25T X.12P MALE CONN
44	027389	2	TU FTG PUSH .25TX .25" P EL *
45	030544	1	TU FTG #B400-71-4 0.25T FEM BKHD
46	012799	1	WSHR FLT ZIN 0.38
47	027380	1	TU NYL 1094P-56 LEGRIS 0.25
48			
49			
50	017631	1	LT FIX SPLICE BOX #VGA-1
51	123001	1	LT FIX VFC-100 MTG PLT/BOX
52			
53	310217	1	CTL PID DESPATCH PROTOCOL3
54	057345	1	RELAY CRYDOM D2450
55	159156	1	TERMINAL BLOCK
56	183949	1	CKT BRD 240V LAC/LBB/LEB
57	140097	1	SWITCH TGCO401-TB-B DPST
58	057939	1	STOPPER SLCN #10.5 HI-TEMP*



HEATER UPGRADE OPTION

NOTE: 240 MODEL

REV.	DATE	BY	DESCRIPTION	ECO #
F	4/26/2021	BMW	MADE DOOR LOCK 2 PIECES	2100055
E	8/23/2019	TJB	REPLACED ITEMS 1 (PN 337108) AND 2 (PN 337110) WITH PN 403608 AND 403609.	1900156
D	6/19/2017	NPL	REMOVED 120V OPTION ITEMS 48 (PN 008220), 49 (PN 008231), 52 (PN 261017). ADDED ITEMS 75 AND 76. REMOVED LABELS DIFFERENTIATING OPTIONS BECAUSE THERE IS ONLY THE 240V OPTION.	1700105
C	9/28/2016	DWW	REPLACED ITEM 26 (340652) W/ 271995. ADDED QTY 2 OF ITEM 24. REPLACED ITEM 34 (337090) W/ CORRECT EXH BUILD OUT AY (114413). ADDED 3X OF ITEM 5 & ITEMS 73 & 74.	UPDATED
B	8/28/2015	CCM	REPLACED PN 337040 W/ PN 337007. REPLACED PN 337036 & 337038 W/ PN 344853. REPLACED TOP HINGE SCREW PN 150448 W/ PN 344666. ADDED PN 161199	ECR TBD

DRN	RWF	SCALE	1:9
CK'D	DLM	DATE	11/17/2014
APP	DLM	SMALL TO	---

**Despatch**  
MINNEAPOLIS, MN • KEVILLEX MN

**LAC 1-67-8 REPLACEMENT PARTS**

D — — 340777 F 1 of 1

SIZE	CODE	PART NUMBER	REV	SHT OF SHTS
------	------	-------------	-----	-------------

UNLESS OTHERWISE SPECIFIED DIMENSIONAL TOLERANCES DECIMALS .XX ± .030 .XXX ± .005 THE DESIGN SHOWN ON THIS DRAWING IS THE EXCLUSIVE PROPERTY OF DESPATCH INDUSTRIES. IT IS SUBMITTED WITH THE UNDERSTANDING THAT IT IS NOT TO BE USED FOR ANY PURPOSE OR ITS CONTENTS DISCLOSED WITHOUT THE WRITTEN CONSENT OF DESPATCH INDUSTRIES.

COPYRIGHT ©2014 DESPATCH INDUSTRIES