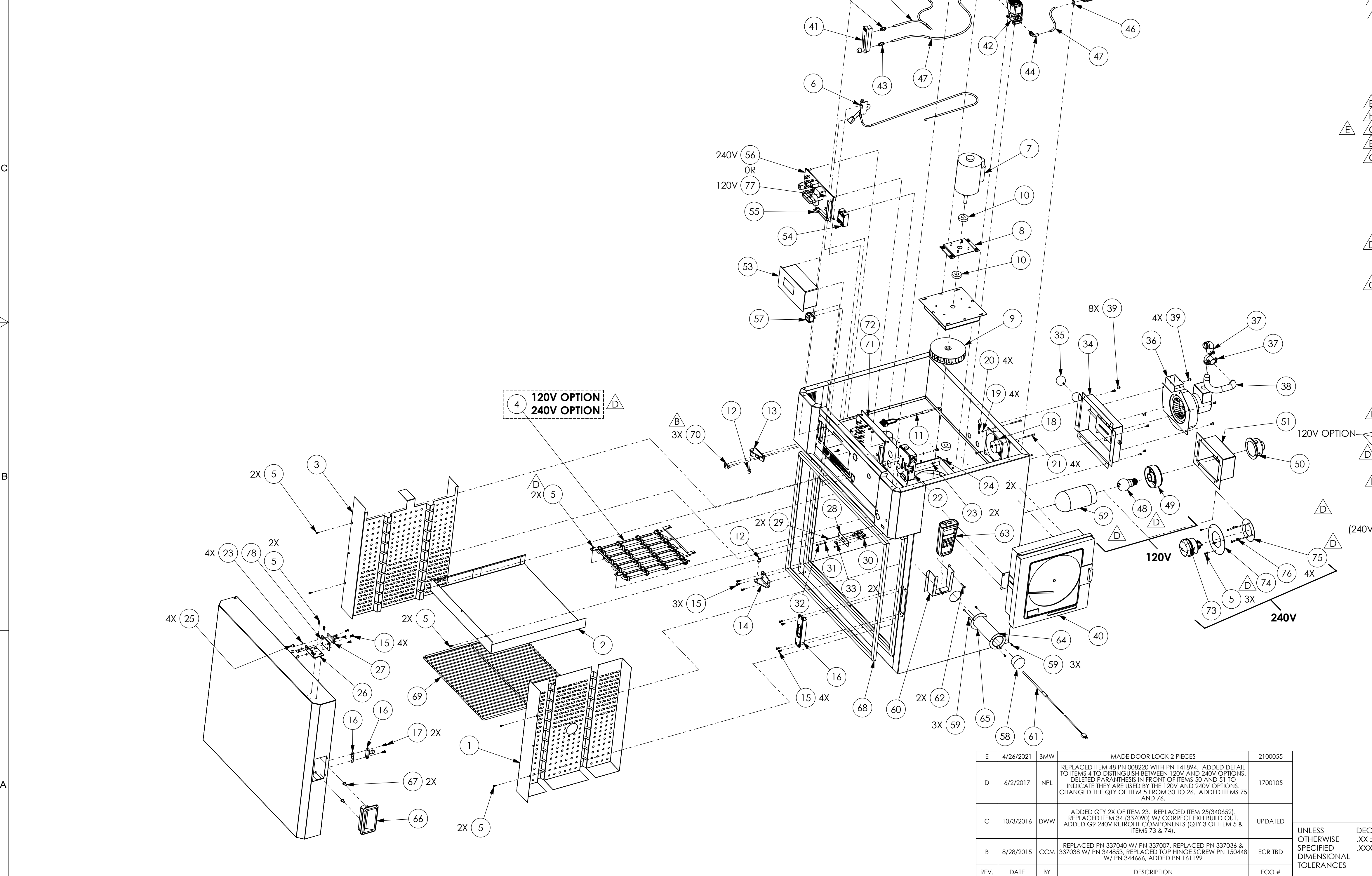


ITEM	PART NUMBER	QTY.	DESCRIPTION
63	325729	1	METER DG OMGA HH801B HAND HELD DUAL CHANNEL
64	336950	1	PORT TUBE 2.0 IN (6.21LG)
65	336951	1	2 INCH PORT COVER PLATE
66	336960	1	HANDLE FLUSH W/ GASKET
67	300262	2	CAP PH TX ZIN M6 X T2
68	337142	1	DOOR SEAL FRAME LAC1-38
69	015783	1	SHELF PLATED WIRE LAC1-38 17.75"X18.75"
70	344666	3	SCW MAC THTX ZIN #10-24X0.50
71	344853	1	CONTROL PANEL PNT AY LAC-8
72	161199	4	SCW SHR SK 18-8 0.19X0.38
73	334111	1	LT FIX 40W G9 OVEN 230V, BJB 77.953.3103.72 W/230V LAMP
74	354826	1	SNAP RING, G9 LT FIXTURE RETROFIT
75	354829	1	FLANGE, HOUSING END, G9 FIXTURE
76	272502	4	SCW MAC PHTX ZIN #08-32X0.50
77	150131	1	CKT BRD 120V LAC/LBB/LEB
78	407434	1	DOOR LOCK PLATE LAC

ITEM	PART NUMBER	QTY.	DESCRIPTION
1	337138	1	SUPPLY DUCT DETAIL LAC1-38-8
2	337139	1	HEATER COVER PLATE
3	337140	1	RECIRC DUCT DETAIL LAC1-38-8
4	007774	1	HTR TUTCO 1.6KW 120V
4	007775	1	HTR TUTCO 1.8KW 208/240V
4	325885	1	HTR TUTCO 4.8KW 208/240V 21-4075-00
5	133033	26	SCW SM PHTX ZIN #06X0.50
6	090531	1	CHOKE CBL 3'LG 402L-032-17 W/COATED CABLE
7	141828	1	MTR 00.25HPSODP11523015060
8	337034	1	MOTOR MTG PLATE
9	015876	1	FAN WH 05.75X01.00X0.500 ALZ CCW
10	130311	2	SEAL 1.5 OD X 0.62 ID X .38
11	340595	1	T/C AY LAC
12	016008	2	BRG SLVFLG BRZ 0.38X0.25X0.50*
13	337045	1	HINGE PIVOT PNT AY - UPPER LEFT
14	340638	1	HINGE PIVOT PNT AY - LOWER LEFT
15	150448	11	SCW MAC FHTX ZIN #10-24X0.50
16	336961	1	LATCH 0535L00004 RLR GRIP
17	272606	2	SCW MAC PHTX ZIN #10-24X0.50
18	006049	1	ENCL BLWR UF12A12 STH 115V
19	012814	4	WSHR LK ZIN #06 SHKPRF INT
20	008484	4	NUT HX ZIN #06-32
21	018967	4	SCW MAC RHSL ZIN #06-32X2.00
22	313227	1	SW SI A-B 440G-T27123 240V SERIES 'E' W/O ACT
23	012834	6	WSHR LK ZIN #10 SPG
24	407436	2	SCW MAC PHTX ZIN #10-32 X 0.75
25	271995	4	NUT, ACORN 18-8 #10-24
26	407433	1	DOOR LOCK BRKT LAC
27	161827	1	SW SI A-B 440G-A27011 STD ACTUATOR
28	071129	1	BRKT SW MICRO 2AC6 CLEAN ROOM
29	010889	2	SCW MAC RHSL 18-8 #06-32 X 0.38
30	051045	1	SW MICRO 2AC6
31	008464	1	NUT HX 18-8 #06-32
32	051170	1	SCW MAC PHSL18-8 #06-32X0.75
33	014011	2	SCW MAC RHSL ZIN #06-32X0.25
34	337090	1	DAMPER BOX AY/ WLDMT
35	002608	1	KNOB, SPHERICAL PLASTIC HAND
36	098365	1	FAN AY EXH LAB
37	005247	2	CDT CONN FLEX 0.50 90 DEG3132
38	005314	1	CDT FLEX 0.50
39	122185	12	SCW TT PHTX ZIN #08-32 X 0.38
40	138680	1	REC RC1 PRTLW MRC51000015AF
41	051706	1	METER-FLW RMA-10D-BV 20-200SCFH/5-95 LPM WITH VALVE
42	141812	1	VLV SOL SC8262H202 .25 NC 240
43	027385	3	TU FTG 31 15.56.11 .25T X.12P MALE CONN
44	027389	2	TU FTG PUSH .25TX .25"P EL *
45	030544	1	TU FTG#B400-71-4 0.25T FEM BKHD
46	012799	1	WSHR FLT ZIN 0.38
47	027380	1	TU NYL 1094P56-00 LEGRIS 0.25
48	141894	1	LT BULB 40A15 40W MED BASE OVEN-120V
49	008231	1	LT FIX CAP AY #VFC-100
50	017631	1	LT FIX SPLICE BOX #VGA-1
51	123001	1	LT FIX VFC-100 MTG PLT/BOX
52	261017	1	LT FIX GLOBE VCGP-100 500F MAX
53	310217	1	CTL PID DESPATCH PROTOCOL3
54	057345	1	RELAY CRYDOM D2450
55	159156	1	TERMINAL BLOCK
56	183949	1	CKT BRD 240V LAC/LBB/LEB
57	140097	1	SWITCH TGCO401-TB-B DPST
58	057939	1	STOPPER SLCN #10.5 HI-TEMP*
59	132623	6	RIV POP SST .12DIAX.032X.187 LG
60	163023	1	POCKET PROBE READOUT
61	163101	1	T/C K48U-006-00-19-F1B084-6
62	272527	2	SCW TT PHTX ZIN #08-32X1.00



NOTE: 120V OR 240V MODEL

REV.	DATE	BY	DESCRIPTION	ECO #
E	4/26/2021	BMW	MADE DOOR LOCK 2 PIECES	2100055
D	6/2/2017	NPL	REPLACED ITEM 48 PN 008220 WITH PN 141894. ADDED DETAIL TO ITEMS 4 TO DISTINGUISH BETWEEN 120V AND 240V OPTIONS. DELETED PARANTHESIS IN FRONT OF ITEMS 50 AND 51 TO INDICATE THEY ARE USED BY THE 120V AND 240V OPTIONS. CHANGED THE QTY OF ITEM 5 FROM 30 TO 26. ADDED ITEMS 75 AND 76.	1700105
C	10/3/2016	DWW	ADDED QTY 2X OF ITEM 23. REPLACED ITEM 25(340652). REPLACED ITEM 24 (337090) W/ CORRECT EXH BUILD OUT. ADDED G9 240V RETROFIT COMPONENTS (QTY 3 OF ITEM 5 & ITEMS 73 & 74).	UPDATED
B	8/28/2015	CCM	REPLACED PN 337040 W/ PN 337007. REPLACED PN 337036 & 337038 W/ PN 344853. REPLACED TOP HINGE SCREW PN 150448 W/ PN 344666. ADDED PN 161199	ECR TBD

UNLESS OTHERWISE SPECIFIED DIMENSIONAL TOLERANCES

DECIMALS .XX ± .030 .XXX ± .005

THE DESIGN SHOWN ON THIS DRAWING IS THE EXCLUSIVE PROPERTY OF DESPATCH INDUSTRIES. IT IS SUBMITTED WITH THE UNDERSTANDING THAT IT IS NOT TO BE USED FOR ANY PURPOSE OR ITS CONTENTS DISCLOSED WITHOUT THE WRITTEN CONSENT OF DESPATCH INDUSTRIES.

DRN	RWF	SCALE	1:9
CK'D	DLM	DATE	11/18/2014
APP	DLM	SMALL TO	---

**Despatch**  
MINNEAPOLIS, MN • KEVILLIEM

**LAC 1-38-8 REPLACEMENT PARTS**

D	---	340778	E	1 of 1
SIZE	CODE	PART NUMBER	REV	SHT OF SHTS

COPYRIGHT ©2014 DESPATCH INDUSTRIES